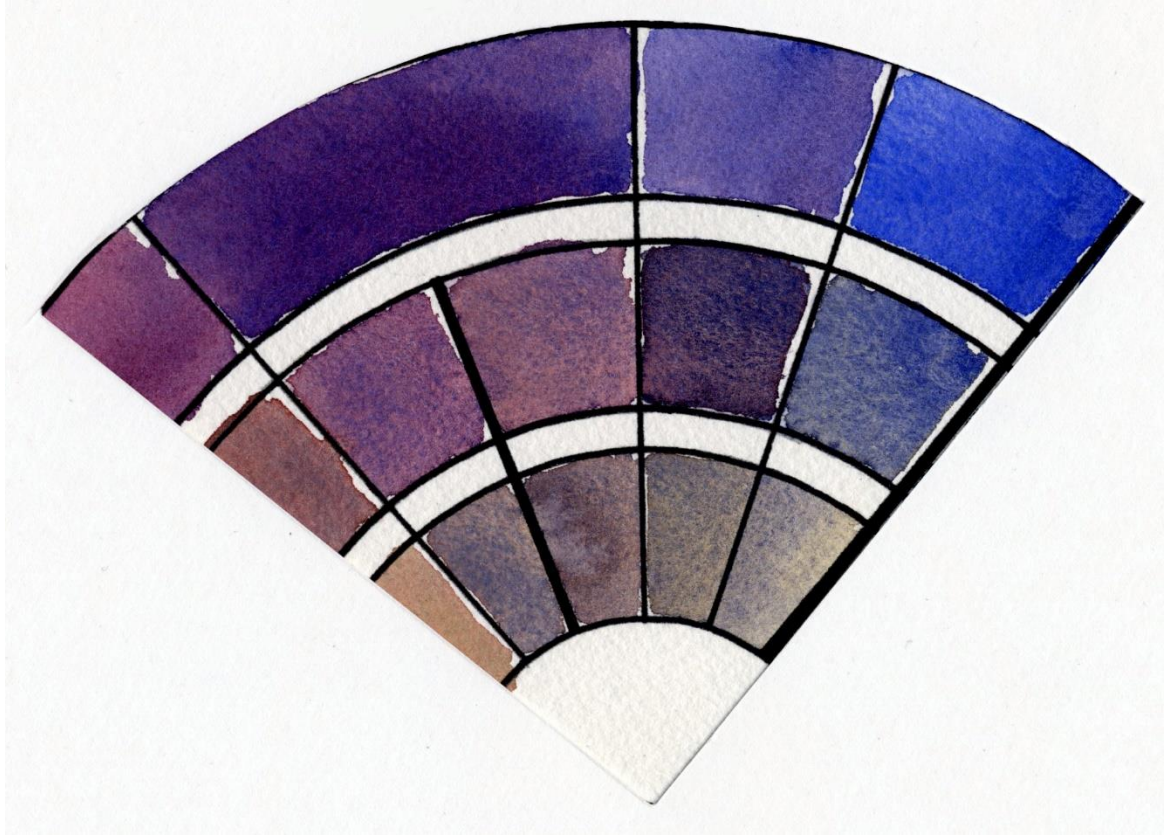


Analogous Color Schemes

Analogous colors are those that are similar to each other and found adjacent or near each other on a color wheel. Paintings that use analogous color will have a great deal of color harmony, which reinforces the Unity of the painting. Paintings based around an analogous color scheme will also have a definite mood that is visually reinforced throughout the painting.



Two potential drawbacks of Analogous color schemes are that they can be harmonious to the point of monotony and certain groups of analogous colors are not well suited for certain subjects. Avoiding a monotonous look often requires wise use of value. In some analogous color groups, it is impossible to attain a wide range of value, requiring an almost masterful use, placement and contrast of color intensities.

Analogous color schemes are useful for:

- Creating a great sense of color harmony
- Creating and reinforcing the mood of the painting
- Paintings of subjects in which the local color can be matched with a particular analogous color group

Drawbacks of Analogous color schemes:

- Lack of variety in color range can reduce visual interest
- Certain Analogous color groups are not well matched for certain subject types
- Limited color range requires skillful use of value and/or color intensity

Experiment with the Analogous Color Scheme by creating a small composition and paint it repeatedly, using a different Analogous color group each time. Study the effect on mood, light, and temperature with each group and think about what analogous groups would work best with different subjects.

Analogous Color Schemes with Complementary Colors

Analogous colors are those that are similar to each other and found adjacent or near each other on a color wheel. Paintings that use analogous color will have a great deal of color harmony.

Two potential drawbacks of Analogous color schemes are that they can be harmonious to the point of monotony and certain groups of analogous colors are not well suited for certain subjects. Adding a color to the palette and painting that is complementary to the analogous set helps offset the drawbacks of a pure analogous color scheme.

Analogous color schemes with a complement are useful for:

- Creating a great sense of color harmony
- Creating and reinforcing the mood of the painting
- Paintings of subjects in which the local color can be matched with a particular analogous color group

The addition of the complement helps:

- Add color variety and increase visual interest
- Add focus and attention in important areas by contrast
- Has the potential to increase the available value range

